



Electrical Power System



We put the power in your hands.

With **4-** 3,500 watt inverters, **8-** 4D AGM Deep Cycle Batteries, **4-** onboard alternators and a **20kW** Generator, we've given you **plenty of power** at your control. Our unique **Smart Energy Module** gives you **real time** analytics so you can make the best choices for power management or sit back and let the system do it for you. While at the same time the use of marine grade **home run wiring**, limited use of relays and **redundant systems** make this one smart choice.



20kW PowerTech Ultimate Generator

- Millennium's exclusive roof mounted generator radiator system
- Generator exhausts through roof
- Auto start feature controlled by Lutron and Savant
- Unique battery boost circuitry
- Power loss triggered emergency start system with email notification capabilities
- Ultra quiet marine grade compartment with sound dampening insulation system
- Generator starting can utilize either chassis or house batteries



Shore Power

- 100A transfer switch
- 85' shore power cord on Glendenning electric reel with remote control
- 15A to 30A shore cord adapter and a 30A to 50A shore cord adapter
- Shoreline reverse polarity monitor
- Buddy plug



4D AGM Deep Cycle Batteries

- Low internal resistance
- Delivery and absorption of higher amperage
- Perform well in a variety of temperatures
- Flexible charge and discharge rates
- Aircraft class cell construction meets military shock and vibration requirements
- Rapid recharge cycle capacity
- Light weight & smaller footprint
- "Set and Forget" battery boost switch



Fully automated

- All aspects controlled through the home automation system
- iPad touchpad in dash and iPad Mini touchpad in plumbing bay
- Remote diagnostics



14,000 Watts of Inverting Power

- 4 – 3,500 watt Outback 24V pure sine wave inverters
- 4 inverter disconnects with marine grade switches
- 2 manual marine grade by-pass switches
- Dedicated charger for engine batteries with auto disconnect
- Smaller footprint than other power system configurations
- Ability to effectively operate in extreme temperature ranges
- Higher capacity during motor startups (A/C, water pump)
- NO "tripping the breaker" syndrome
- Run All A/C's while in transit



System Basics

- GFCI breakers in one location
- Limited use of relays
- Marine grade tin plated copper stranded wiring
- Continuous uninterrupted Home Run Wiring
- 24V house electrical charging system
- Marine grade electrical breaker panels



Alternator System

- Allows battery charging while in transit
- 4- 120A Bosch alternators
- Use engine power to charge house & chassis batteries
- Prevost Prime Charging System
- Alternator bypass switch



Smart Energy Module

- Monitor energy consumption
- Energy usage per appliance
- Historical tracking of energy spikes

You'll never feel powerless again!

Detecting a pattern here? We're a little power hungry here at Millennium!

- **More inverting power**

With 4-3,500 watt inverters a Millennium is like a rolling power plant. Our method of wiring allows for in excess of 14,000 watts of power, all self-managed through the home automation system so you can use your coach like you use your home. No worries about power demands or surges. We take the guess work out of power management!

- **Durability of the systems**

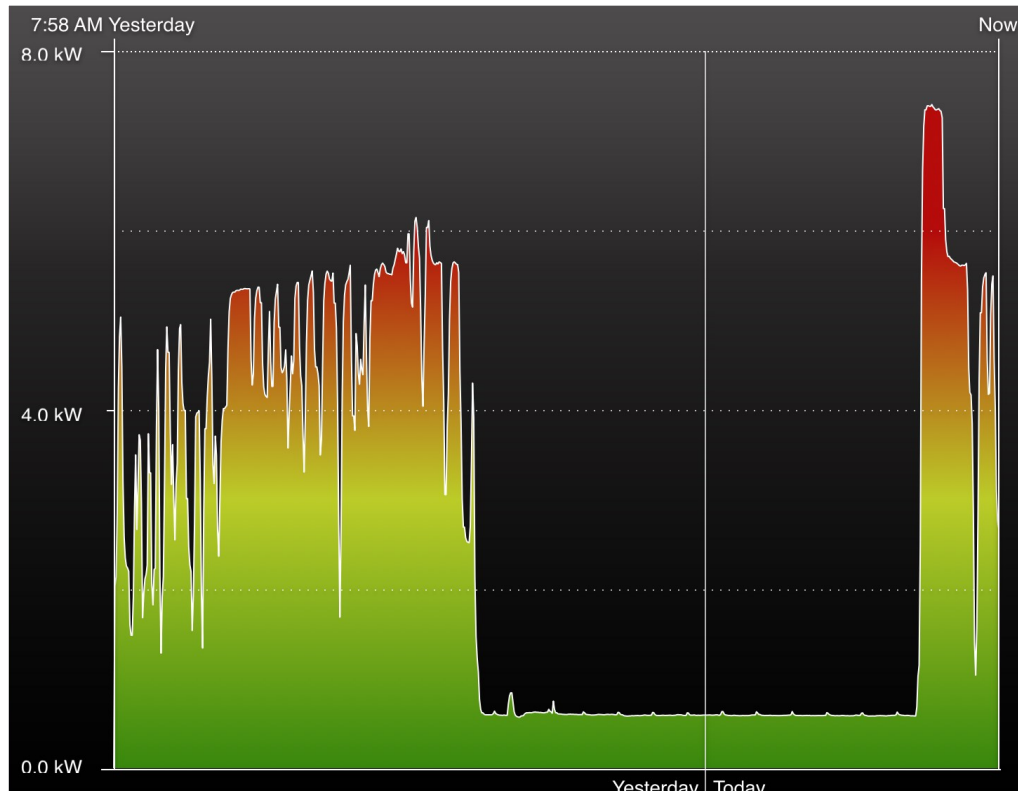
The strength and durability of your electrical charging system lies in your choice of batteries. Millennium installs (8) 4D AGM batteries, the workhorse of all batteries, they combine the best power, weight and safety standards available in the industry. AGM batteries offer a low internal resistance and rapid migration of the acid in to the glass matt plate. Simply stated, AGM batteries deliver and absorb higher rates of amperage. This is important in the RV industry because of the constantly changing environmental conditions as well as the unique power demands of each user. From Maine to Arizona, 0 to 120 degrees, they perform well in a variety of temperatures. With flexible charge and discharge rates, we're not limited to how much power we can pull or how quickly we re-charge. This comes in handy when you're making a quick pit stop for lunch on a 105 degree day. We can pull enough power to run 4 A/C units and the coach without having to kick on the generator and then when you hit the road again, initiate a rapid charge cycle to power them back up.



- **Efficient power generation during transit**

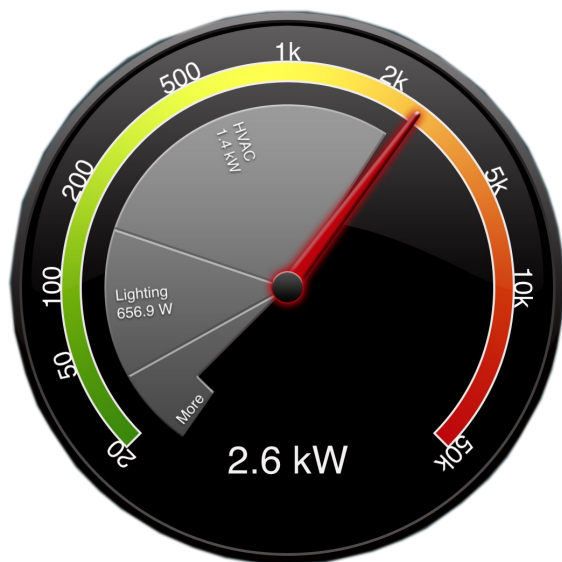
Through the use of 3 house alternators and 1 chassis alternator, we make use of the engine power during transit to charge the house and chassis batteries. By incorporating a marine grade switching system we can cycle alternators on or offline as load requirements change. Or in the event of an alternator or belt failure, any single unit can be taken offline allowing the remaining units to "pick up the slack."

Smart Energy Module



Stay in charge with individual monitoring of power usage for each appliance, system, charger and air conditioner. Set parameters can also trigger service alert emails to the Millennium service department.

- Monitoring of Total Power Usage
- Monitor individual appliances power usage
- Alert if corrupt power is detected





Enjoy the Ride and Relax

Through the integration of two industry giants, **Lutron Home Automation** and **Savant**, Millennium has created a system so smart it takes the guesswork out of operating your coach. With a **“one button touch”** system design, you’re able to set your parameters and walk away. The coach will respond to power demands and adjust accordingly without ever tripping a breaker. Internal systems monitor incoming power flow, and if corruption is detected, will automatically disconnect and draw from internal power sources. Your job? **Sit back and enjoy the ride.**



1-877-322-0190

www.MillenniumLuxuryCoaches.com